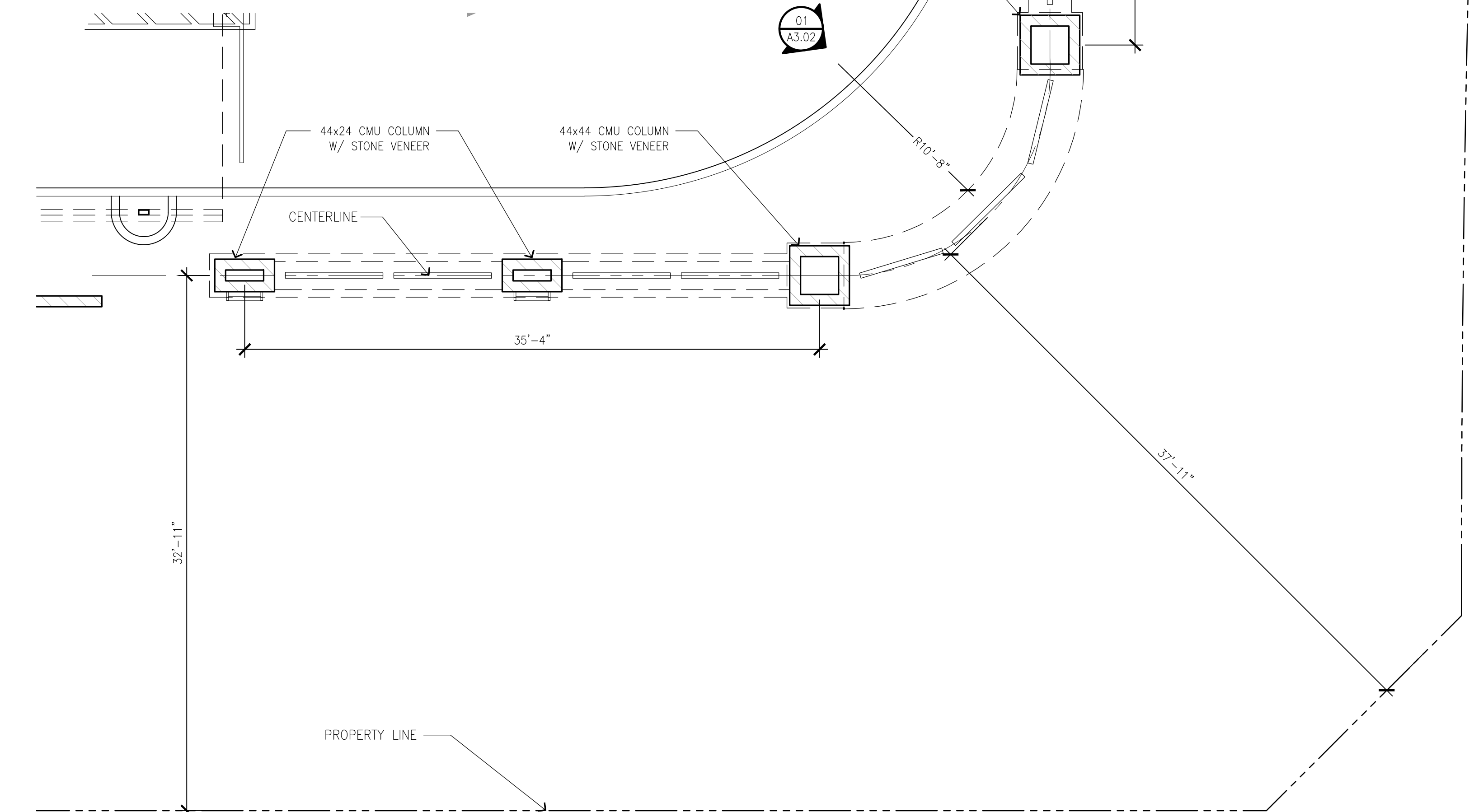
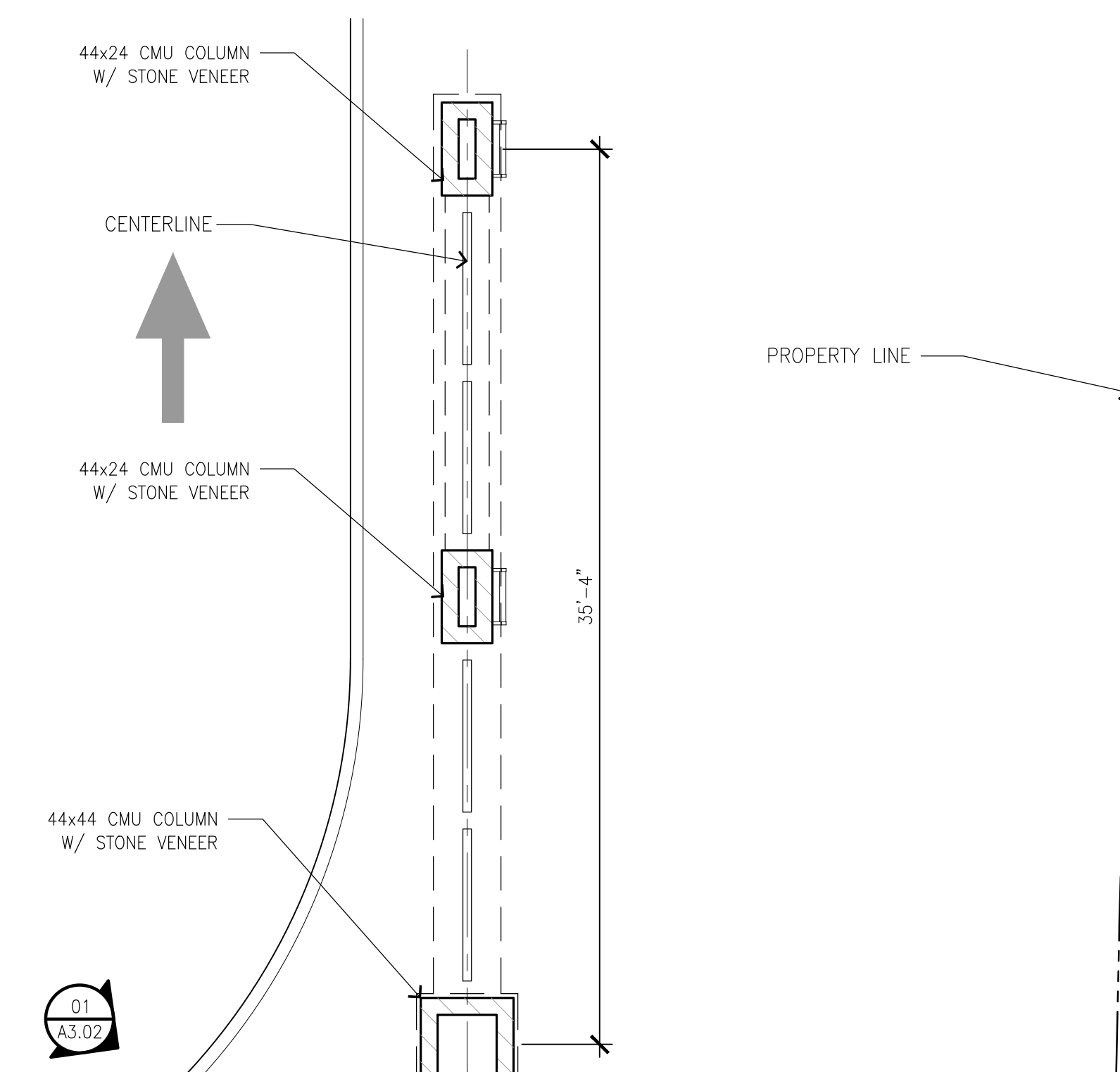
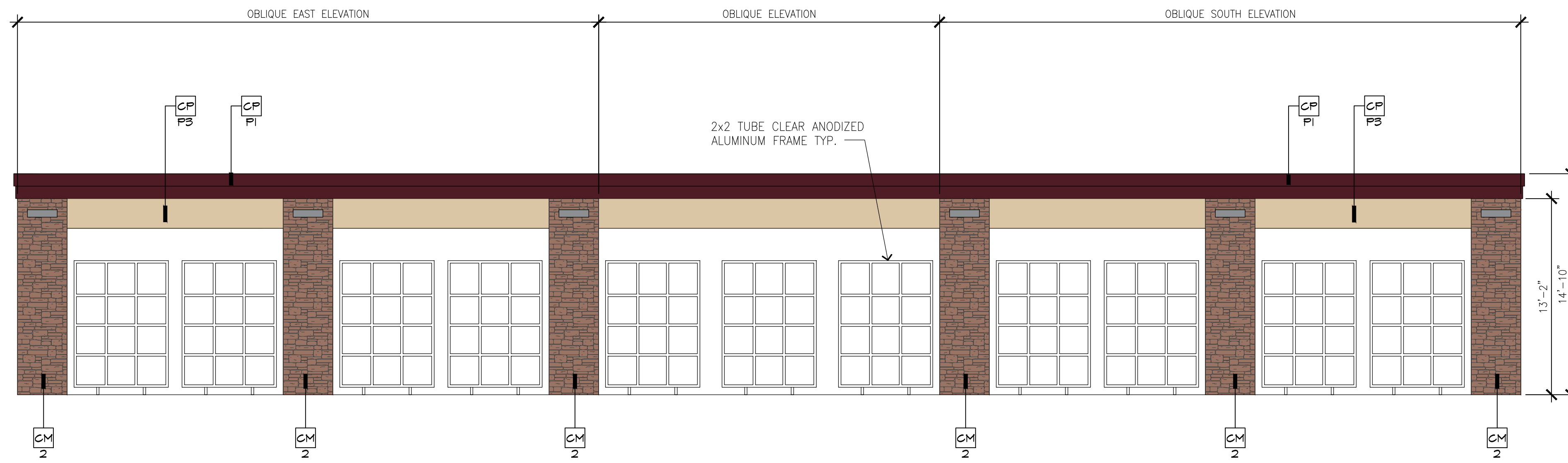


# PC EXHIBIT H



1 SOUTH ELEVATION - LANDSCAPE SCREEN WALL  
SCALE: 3/16" = 1'-0"

### COLOR LEGEND

|    |  |                            |         |  |  |
|----|--|----------------------------|---------|--|--|
| P1 |  | DARK AUBURN<br>SW 6034     | CM2     |  | CORONADO STONE<br>"QUICK STACK CARMEL<br>MOUNTAIN" |
| P2 |  | TORCHLIGHT<br>SW 6374      | CM3     |  | CORONADO STONE<br>CHISELED STONE SILL<br>"BUFF"    |
| P3 |  | ANTIQUE WHITE<br>SW 6119   | P6      |  | FIRESTONE METALS<br>"BRANDYWINE"                   |
| P4 |  | SNOWBOUND<br>SW 7004       | W1 & W2 |  | CLEAR ANODIZED ALUMINUM                            |
| P5 |  | BELIEVABLE BUFF<br>SW 6120 |         |  |  |
| P6 |  | SAFETY YELLOW<br>SW 4084   |         |  |  |

2 SCREEN WALL PLAN  
SCALE: 3/16" = 1'-0"

### KEY NOTES:

- CM1 BASALITE SMOOTH HONED FACE CONCRETE MASONRY UNITS - INTEGRAL COLOR STANDARD #225 LIGHT GRAY, WITH INTEGRAL FACTORY "RAINBLOC" WATER REPELLENT ADMIXTURE, MORTAR TO HAVE "RAINBLOC" FOR MORTAR ADMIXTURE, MORTAR COLOR TO MATCH.
- CM2 BASALITE SPLIT FACE CONCRETE MASONRY UNITS INTEGRAL COLOR STANDARD #190 DARK GRAY WITH INTEGRAL FACTORY "RAINBLOC" WATER REPELLENT ADMIXTURE, MORTAR TO HAVE "RAINBLOC" FOR MORTAR ADMIXTURE, MORTAR COLOR TO MATCH.
- CM3 HONED FACE CONCRETE MASONRY UNIT SILL INTEGRAL COLOR TO MATCH DARK GRAY WAINSCOT WITH INTEGRAL FACTORY "RAINBLOC" WATER REPELLENT ADMIXTURE, MORTAR TO HAVE "RAINBLOC" FOR MORTAR ADMIXTURE, MORTAR COLOR TO MATCH.

- CP ACRYLIC PLASTER COLOR COAT  
COLOR DESIGNATION:

- P1 = MATCH SHERWIN WILLIAMS "QUICK QUACK GREEN"
- P2 = MATCH SHERWIN WILLIAMS #6902 "DECISIVE YELLOW"
- P3 = MATCH SHERWIN WILLIAMS #7004 "SNOWBOUND"

PLASTER COLOR COAT TO BE SAND FINISH

- D1 HOLLOW METAL DOOR - PAINT TO TO MATCH SHERWIN WILLIAMS #1025 "BACKDROP"
- D2 OVERHEAD METAL DOOR - PAINT TO TO MATCH SHERWIN WILLIAMS #1025 "BACKDROP"
- D3 CLEAR ANODIZED ALUMINUM COMMERCIAL GRADE STOREFRONT GLASS DOOR

- DB 8" X 16" THROUGH WALL SCUPPER, COLLECTOR AND DOWNSPOUT. PAINT TO MATCH ADJACENT SURFACE

- EJ 1/4" DEEP REVEAL EXPANSION JOINT

- L LIGHT FIXTURE  
TYPE:

- L1 = LED RADIAL WALL SCONCE (DOWN ONLY)
- L2 = LINEAR FACADE WALL LIGHT (DOWN ONLY)
- L3 = 2 FOOT LED FILASTER LIGHT (DOWN ONLY)
- L4 = WALL PACK (DOWN ONLY)

CONTACT STEVE FRIEDMAN 1.847.830.1444 WITH HERMITAGE LIGHTING FOR ORDERING LIGHTING. (NO EXCEPTIONS)

- MF METAL FASCIA - PAINT TO MATCH SHERWIN WILLIAMS "QUICK QUACK GREEN" (GREEN)

- P 4" PIPE BOLLARD FILLED WITH CONCRETE SEE DETAIL #8/A1.05

- R 2" WIDE X 1/4" DEEP CLEAR ANODIZED ALUMINUM PLASTER REVEAL

- RF METAL ROOF FASCIA - MATCH SHERWIN WILLIAMS "QUICK QUACK GREEN" (GREEN)

- RO 3" DIA PVC ROOF OVERFLOW SCUPPER - PAINT TO MATCH ADJACENT FINISH

- S SIGNAGE BY OTHERS SHOWN DASHED- FOR REFERENCE ONLY UNDER SEPARATE PERMIT. GENERAL CONTRACTOR TO COORDINATE WITH SIGN COMPANY.

- SS STANDING SEAM METAL ROOF FIRESTONE UC3 - "DARK IVY".

- T1 METAL WALL CANOPY SYSTEM - COLOR TO MATCH SHERWIN WILLIAMS "QUICK QUACK GREEN"

- T2 WALL CANOPY TIE-BACK SYSTEM - COLOR TO MATCH SHERWIN WILLIAMS "QUICK QUACK GREEN"

- V 32" WIDE X 16" HIGH VENT - PAINT TO MATCH ADJACENT FINISH; LOUVERS NOT REQUIRED WHEN EQUIPMENT RM. IS AIR CONDITIONED

- W1 EXTERIOR WINDOW ASSEMBLY - TEMPERED GLASS CLEAR ANODIZED ALUMINUM STOREFRONT

- W2 EXTERIOR FAUX WINDOW ASSEMBLY - WITH BLACK CERAMIC FRIT TEMPERED SPANDREL GLASS CLEAR ANODIZED ALUMINUM STOREFRONT

Revision  
No. Date By Ckd. Appr.

Title:

For:

Scale:

Designed JLR  
Drawn JLR  
Checked JLR  
Approved KCH  
Date XX/XX/XX

Job Number  
23359  
Sheet  
A3.02

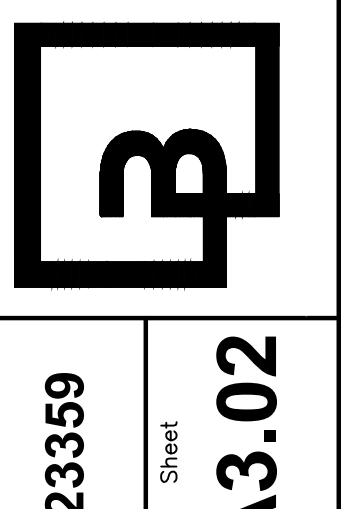
SCREEN WALL ELEVATION  
QUICK QUACK CAR WASH NO. 26-651  
300 NORTH SUNRISE AVE  
ROSEVILLE, CALIFORNIA

QUICK QUACK CAR WASH  
6020 WEST OAKS BLVD., SUIT 300  
ROCKLIN, CA 95765

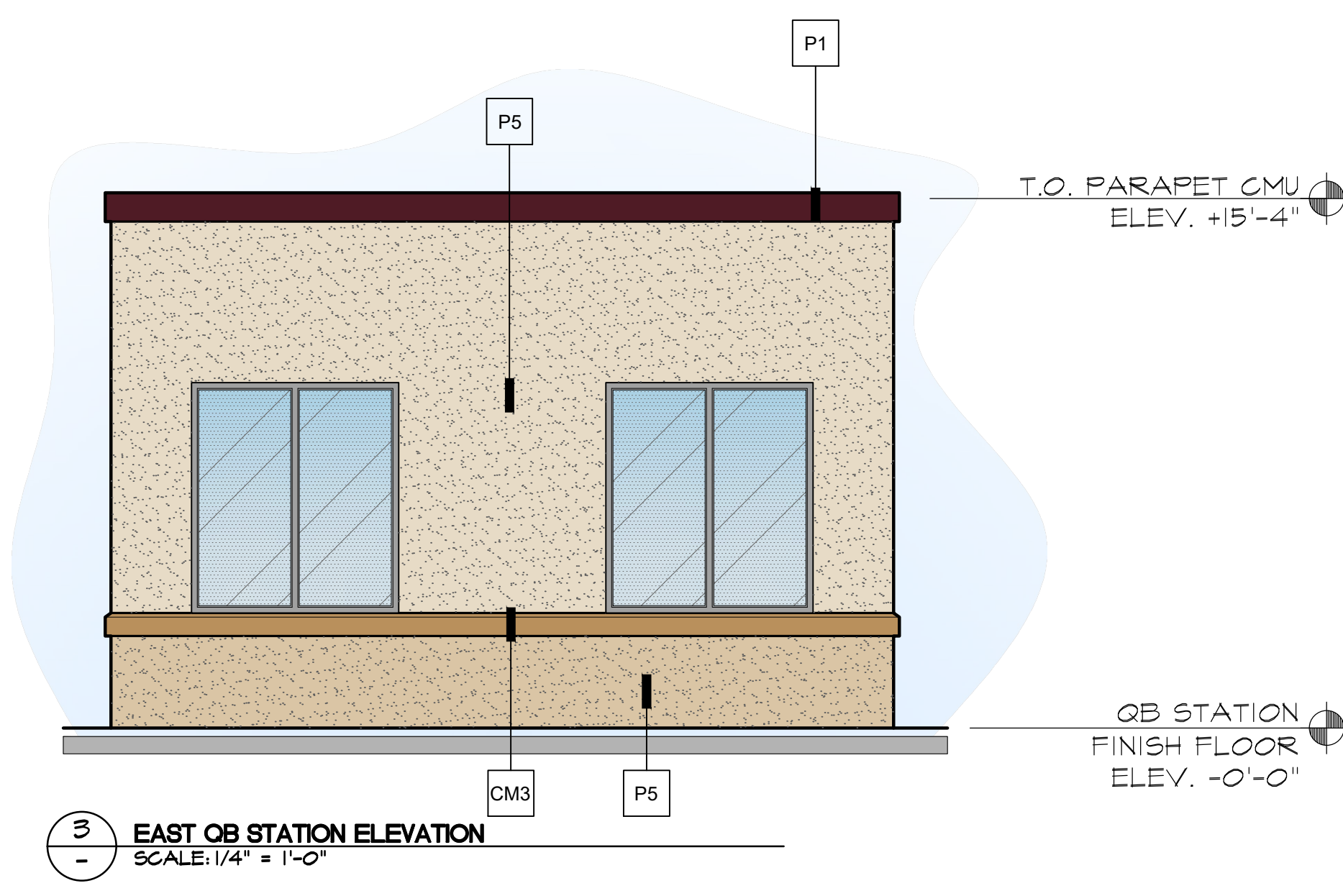
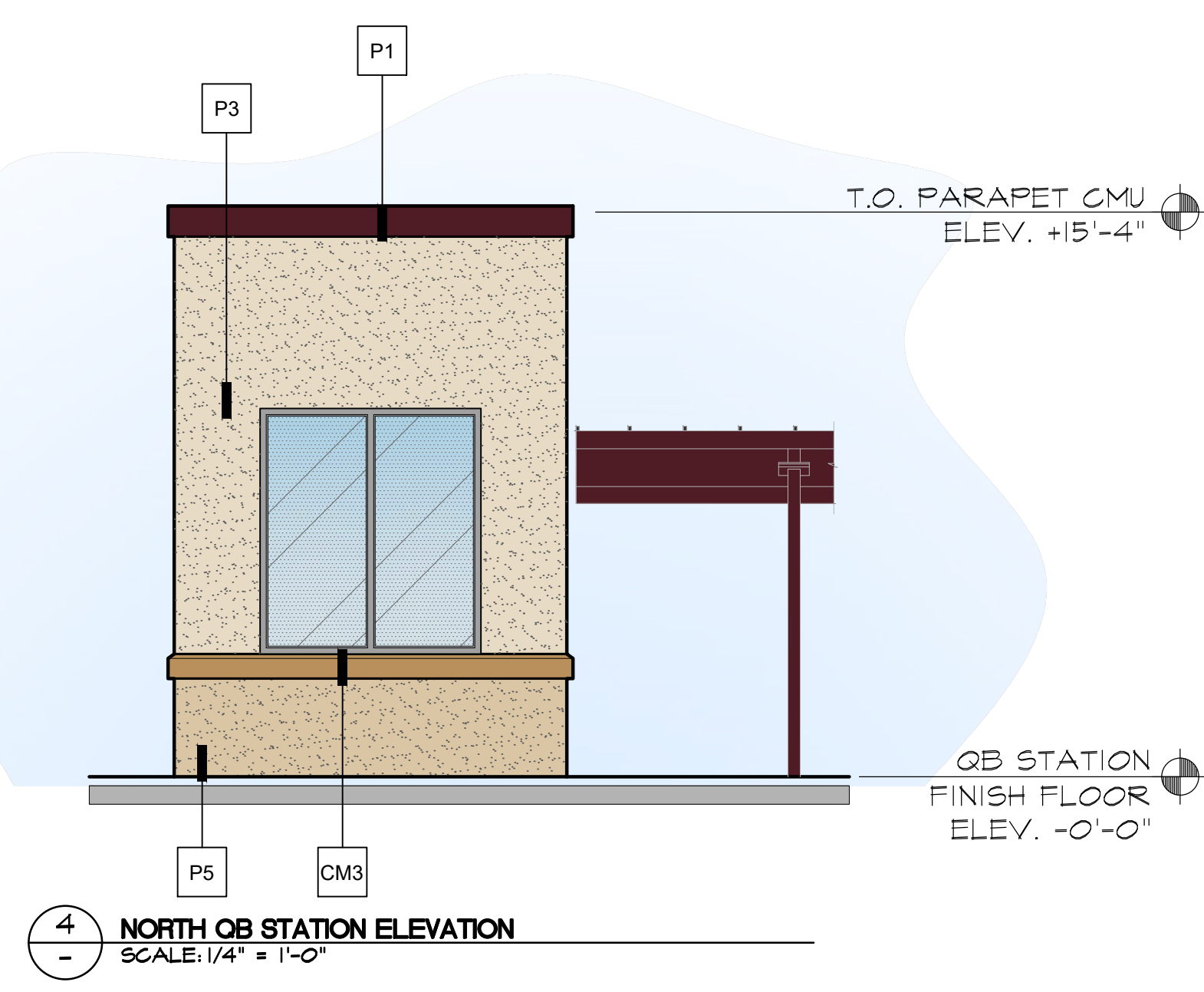
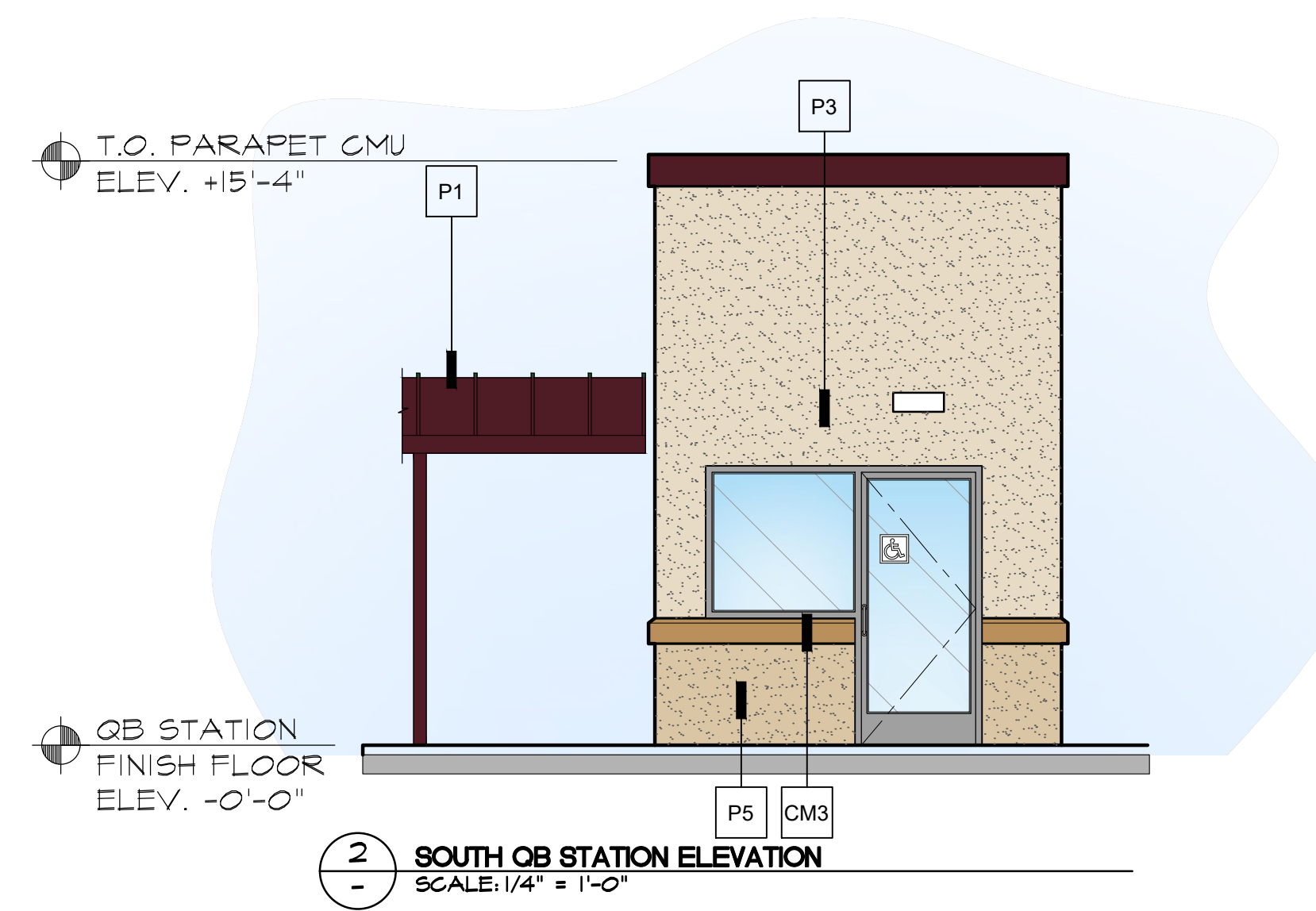
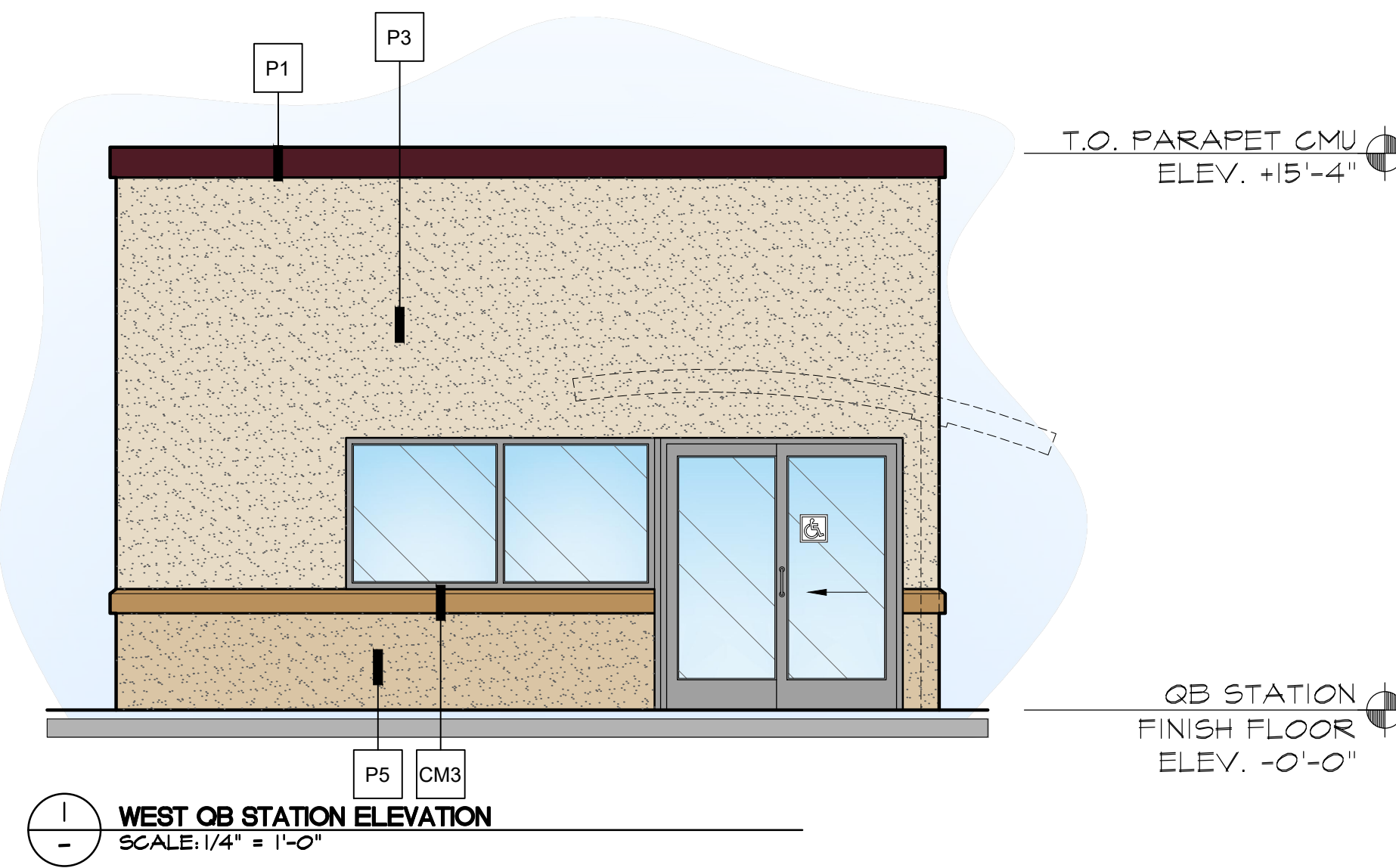


Horizontal  
As Noted  
Vertical  
N/A

**Barghausen**  
Consulting Engineers, Inc.  
18215 72nd Avenue South  
Kent, WA 98032  
425.251.6222  
barghausen.com

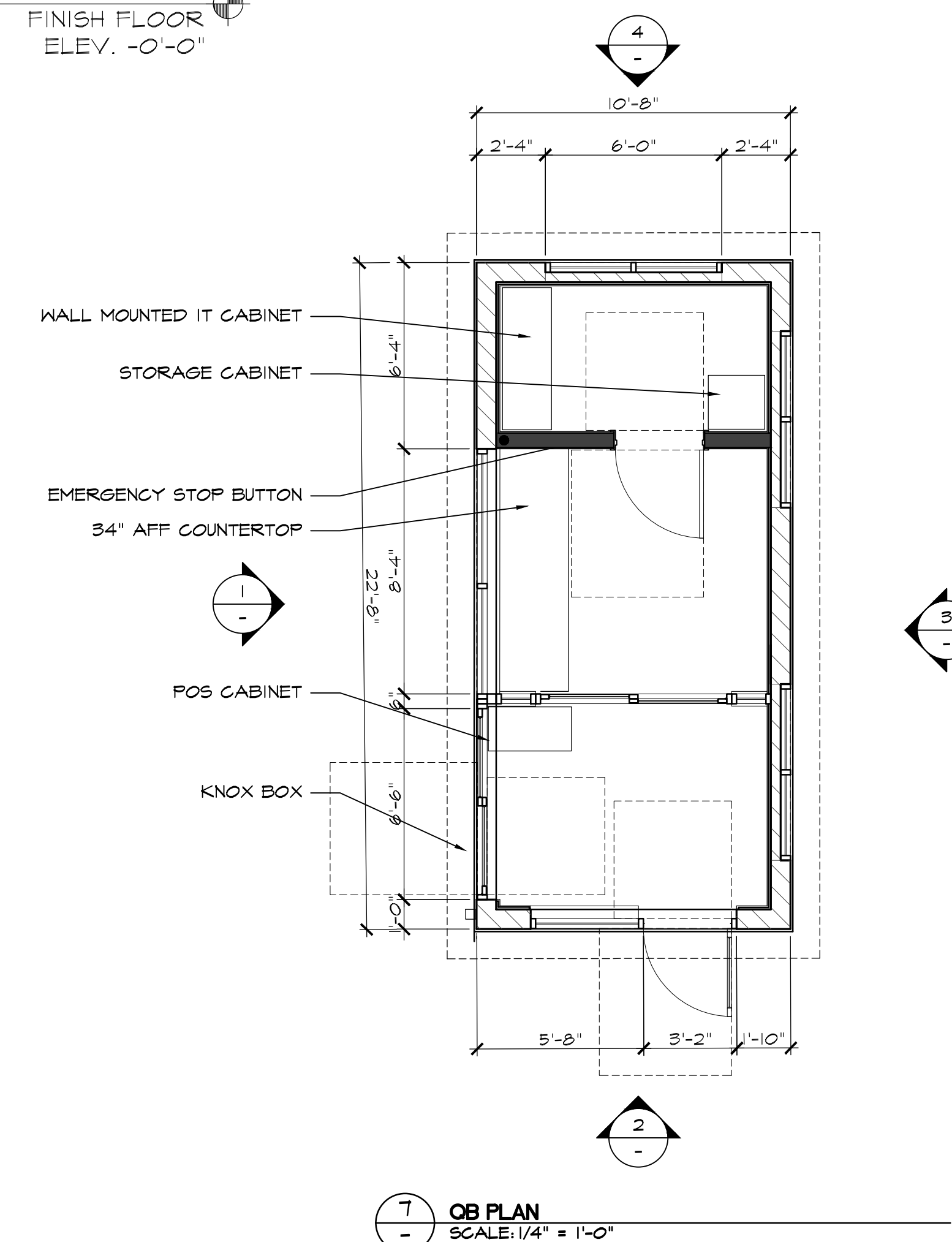


# PC EXHIBIT H



### COLOR LEGEND

|    |  |                            |         |  |   |
|----|--|----------------------------|---------|--|---|
| P1 |  | DARK AUBURN<br>SW 6034     | CM2     |  | CORONADO STONE<br>"QUICK STACK CARMEL MOUNTAIN" |
| P2 |  | TORCHLIGHT<br>SW 6374      | CM3     |  | CORONADO STONE<br>CHISELED STONE SILL "BUFF"    |
| P3 |  | ANIQUE WHITE<br>SW 6119    | P6      |  | FIRESTONE METALS<br>"BRANDYWINE"                |
| P4 |  | SNOWBOUND<br>SW 7004       | W1 & W2 |  | CLEAR ANODIZED ALUMINUM                         |
| P5 |  | BELIEVABLE BUFF<br>SW 6120 |         |  |   |
| P6 |  | SAFETY YELLOW<br>SW 4084   |         |  |   |

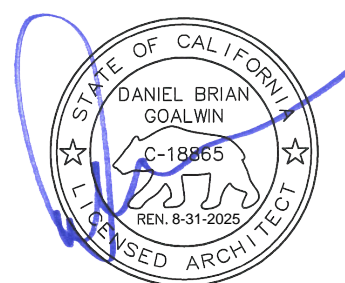


No. Date By Ckd. Appr. Revision

Title:

QB STATION PLAN AND ELEVATIONS  
QUICK QUACK CAR WASH NO. 26-651  
300 NORTH SUNRISE AVE  
ROSEVILLE, CALIFORNIA

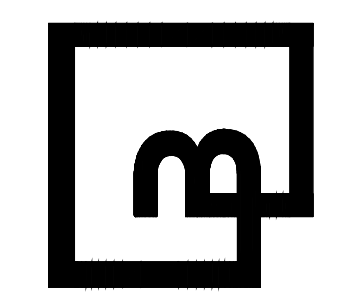
For:  
QUICK QUACK CAR WASH  
6020 WEST OAKS BLVD., SUIT 300  
ROCKLIN, CA 95765



Scale:  
Horizontal As Noted  
Vertical N/A

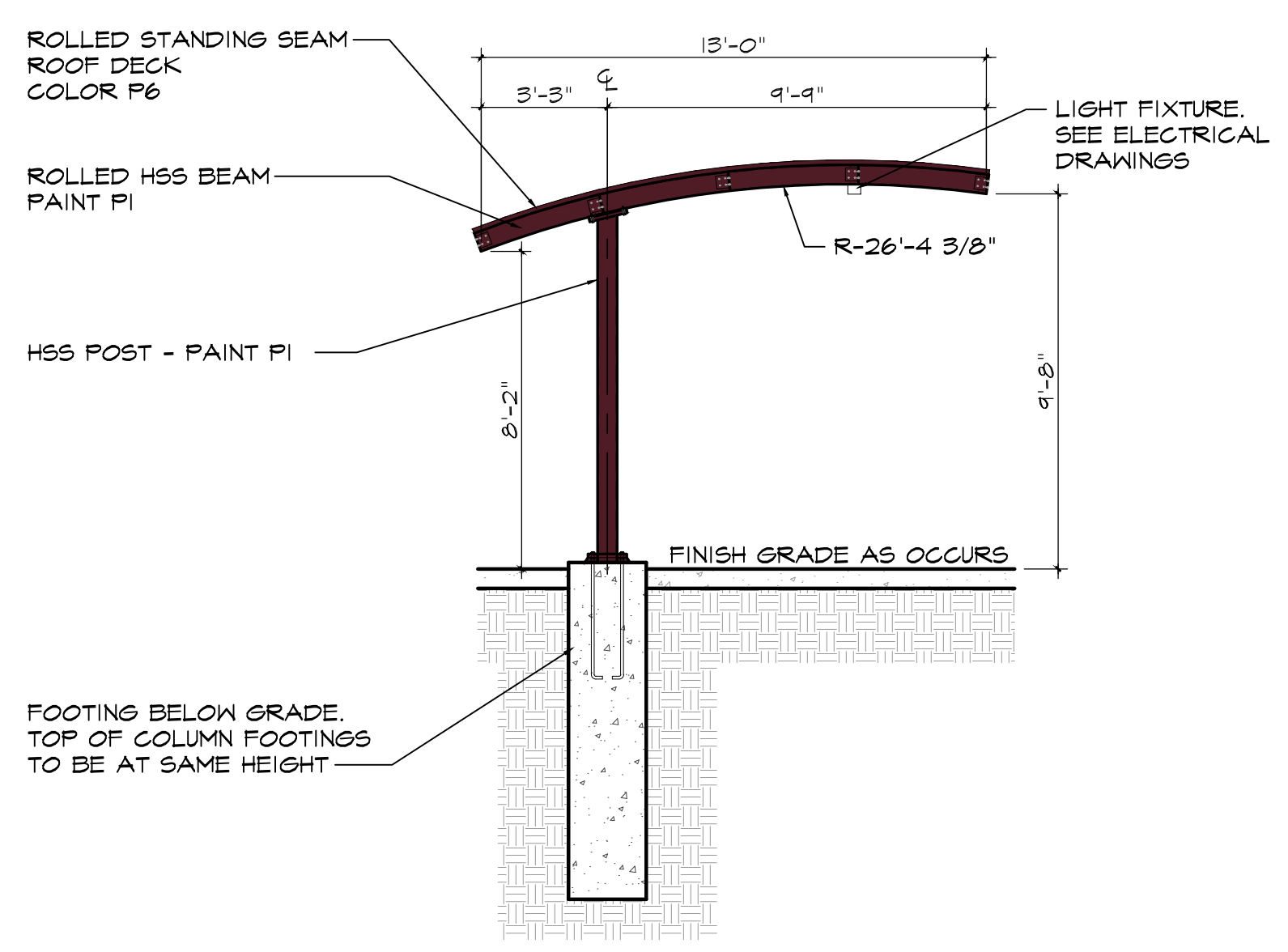
Designed: JLR  
Drawn: JLR  
Checked: JLR  
Approved: KCH  
Date: XX/XX/XX

**Barghausen Consulting Engineers, Inc.**  
18215 72nd Avenue South  
Kent, WA 98032  
425.251.6222 [barghausen.com](http://barghausen.com)

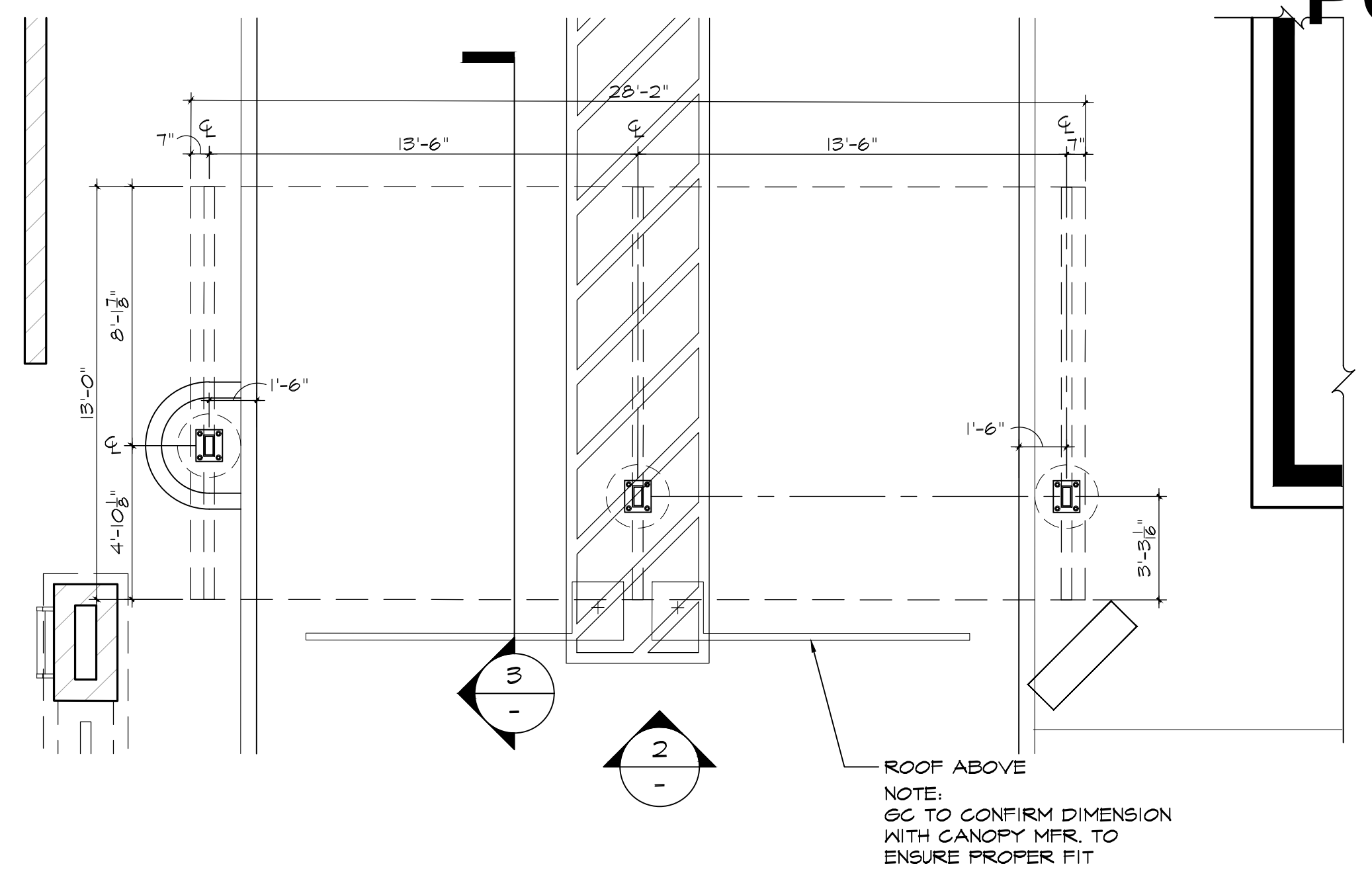


Job Number  
**23359**  
Sheet  
**A1.07**

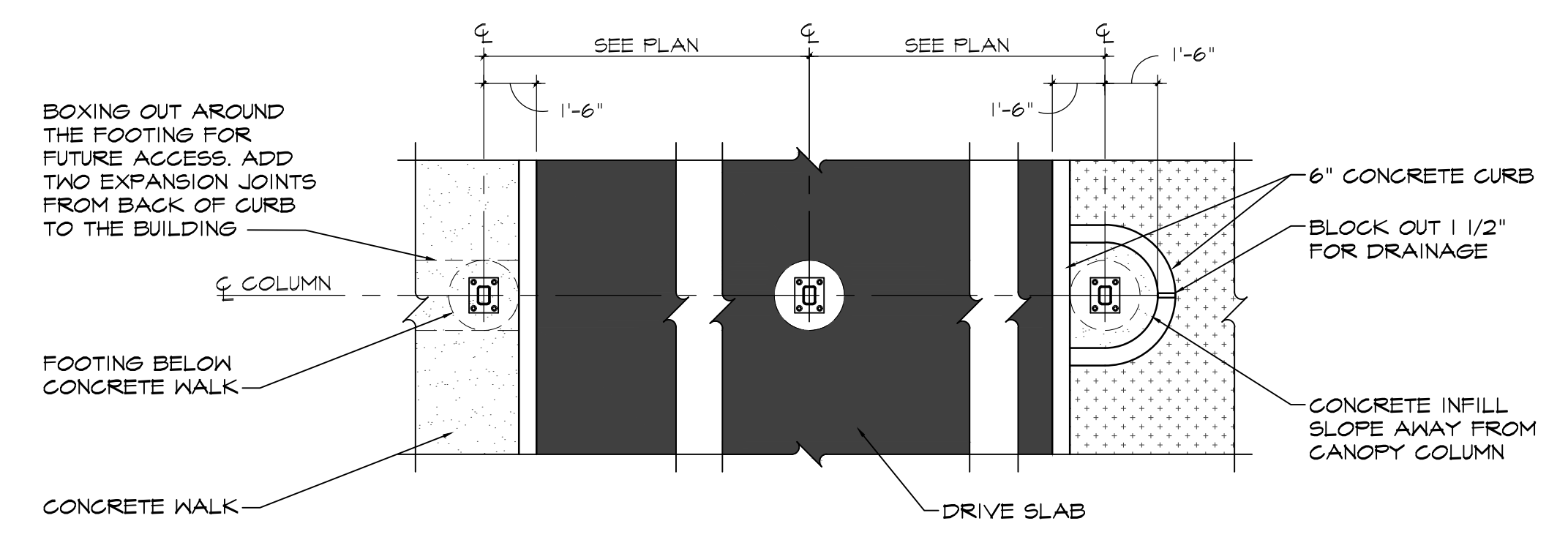
# PC EXHIBIT H



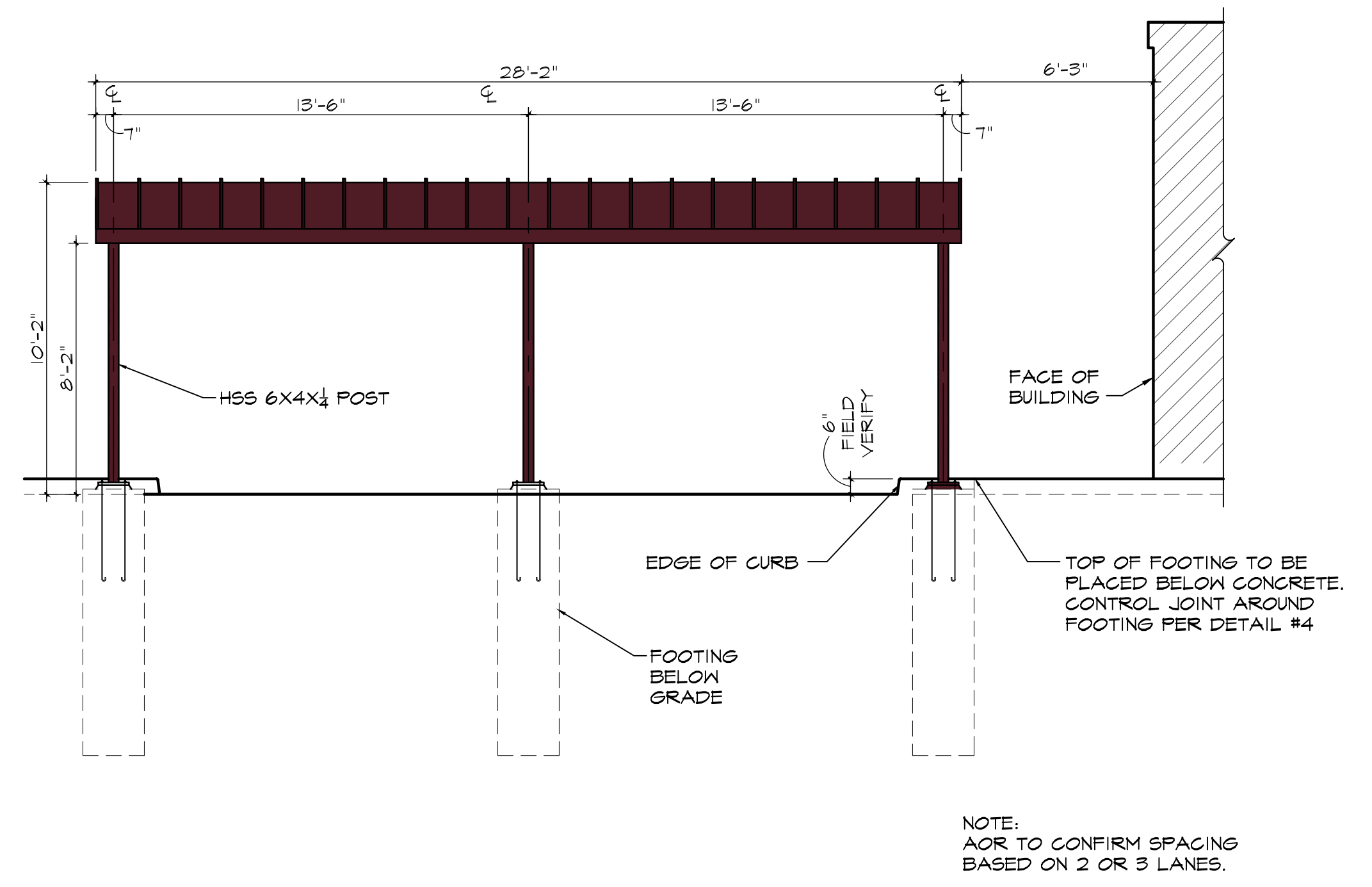
**3 PAY STATION CANOPY SECTION**  
SCALE: 1/4" = 1'-0"



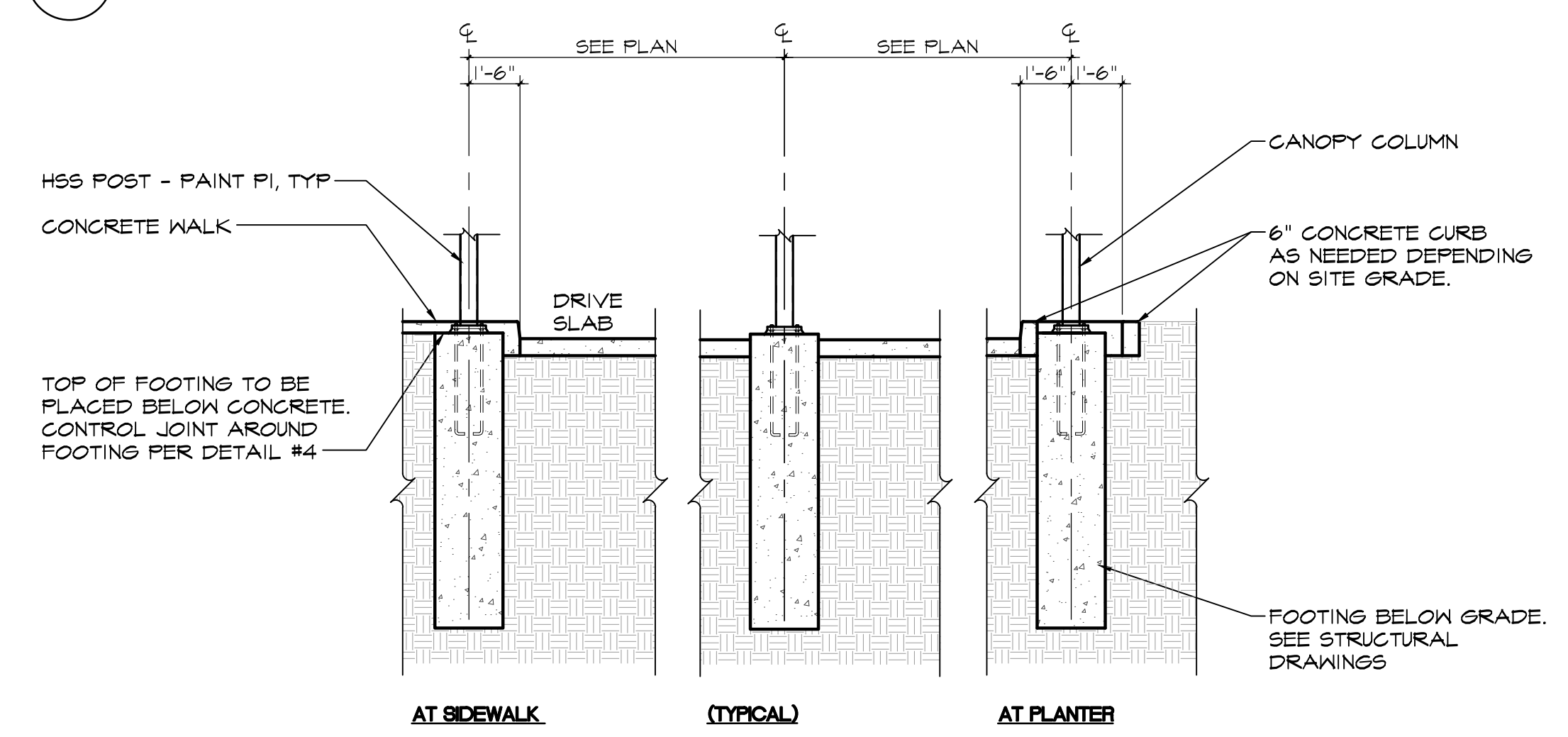
**1 PAY STATION CANOPY PLAN**  
SCALE: 1/4" = 1'-0"



**4 PAY STATION CANOPY CROSS SECTION PLAN VIEW**  
SCALE: 1/4" = 1'-0"



**2 PAY STATION CANOPY ELEVATION**  
SCALE: 1/4" = 1'-0"



**5 PAY STATION CANOPY CROSS SECTION**  
SCALE: 1/4" = 1'-0"

**CANOPY FOOTING NOTES:**

- FOR EACH CANOPY (PAY OR VACUUM), THE TOP OF EACH FOOTING SHALL BE THE SAME ELEVATION.
- THE ELEVATION OF EACH SET OF FOOTINGS WILL BE DETERMINED BY THE HIGHEST GRADE ADJACENT TO THE CONTROL FOOTING.
- THE CONTROL FOOTING IS SET 2" ABOVE THE HIGHEST ADJACENT FINISHED CONCRETE PAVEMENT GRADE.

**COLOR LEGEND**

|    |                            |         |   |
|----|----------------------------|---------|---|
| P1 | DARK AUBURN<br>SW 6034     | CM1     | ANGELUS BLOCK<br>"PLACER CREEK BURNISHED"<br>(SO. CAL.) |
| P2 | TORCHLIGHT<br>SW 6374      | CM2     | CORONADO STONE<br>"QUICK STACK CARMEL<br>MOUNTAIN"      |
| P3 | BELIEVABLE BUFF<br>SW 6120 | CM3     | CORONADO STONE<br>CHISELED STONE SILL<br>"BUFF"         |
| P4 | SNOWBOUND<br>SW 7004       | P6      | FIRESTONE METALS<br>"BRANDYWINE"                        |
| P5 | SAFETY YELLOW<br>SW 4084   | W1 & W2 | CLEAR ANODIZED ALUMINUM                                 |

Revision  
No. Date By Ckd. Appr.

**Title:**  
PAY CANOPY  
QUICK QUACK CAR WASH NO. 26-651  
300 NORTH SUNRISE AVE  
ROSEVILLE, CALIFORNIA

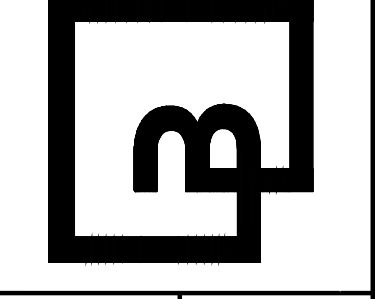
**For:**  
QUICK QUACK CAR WASH  
6020 WEST OAKS BLVD., SUIT 300  
ROCKLIN, CA 95765



Scale:  
Horizontal As Noted  
Vertical N/A

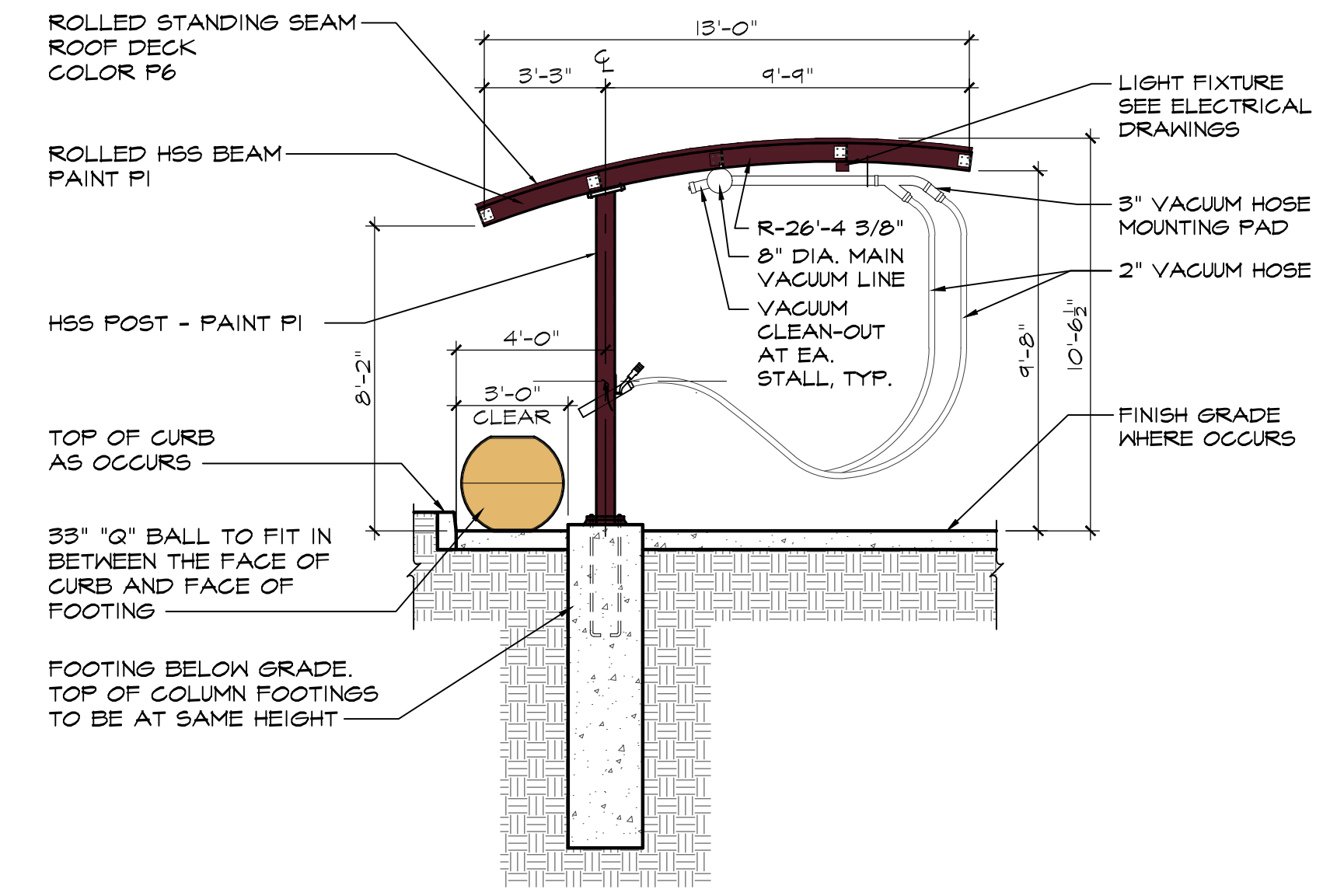
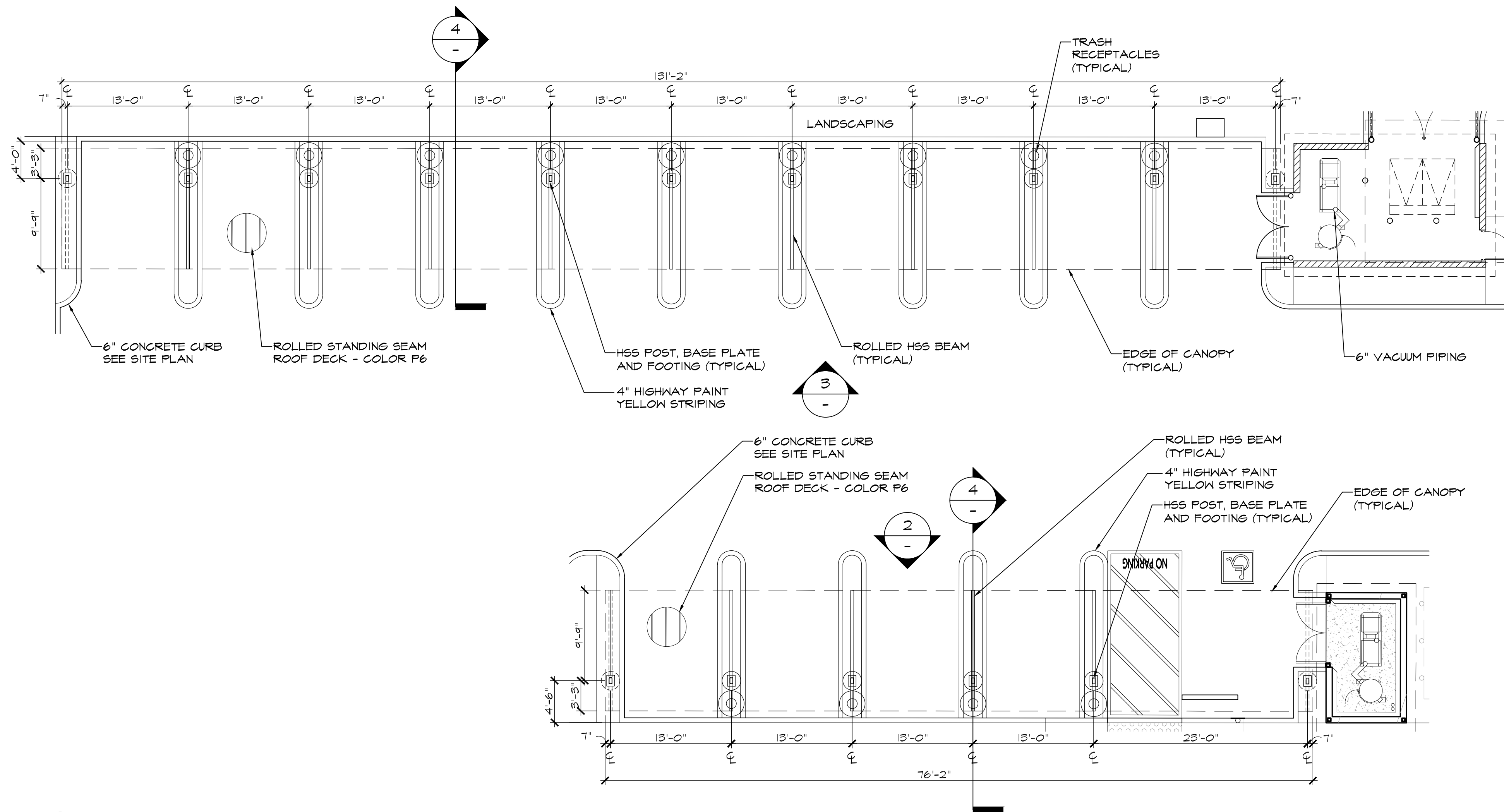
Designed: JLR  
Drawn: JLR  
Checked: JLR  
Approved: KCH  
Date: XX/XX/XX

**Barghausen Consulting Engineers, Inc.**  
18215 72nd Avenue South  
Kent, WA 98032  
425.251.6222 [barghausen.com](http://barghausen.com)



Job Number: **23359**  
Sheet: **A1.03**

# PC EXHIBIT H



**COLOR LEGEND**

|    |                         |         |   |
|----|-------------------------|---------|---|
| P1 | DARK AUBURN SW 6034     | CM1     | ANGELUS BLOCK "PLACER CREEK BURNISHED" (SO. CAL.) |
| P2 | TORCHLIGHT SW 6374      | CM2     | CORONADO STONE "QUICK STACK CARMEL MOUNTAIN"      |
| P3 | BELIEVABLE BUFF SW 6120 | CM3     | CORONADO STONE CHISELED STONE SILL "BUFF"         |
| P4 | SNOWBOUND SW 7004       | P6      | FIRESTONE METALS "BRANDYWINE"                     |
| P5 | SAFETY YELLOW SW 4084   | W1 & W2 | CLEAR ANODIZED ALUMINUM                           |

Revision  
No. Date By Ckd. Appr.

**Title:**  
VACUUM CANOPY  
QUICK QUACK CAR WASH NO. 26-651  
300 NORTH SUNRISE AVE  
ROSEVILLE, CALIFORNIA

**For:**  
QUICK QUACK CAR WASH  
6020 WEST OAKS BLVD., SUIT 300  
ROCKLIN, CA 95765

Scale:  
Horizontal As Noted  
Vertical N/A

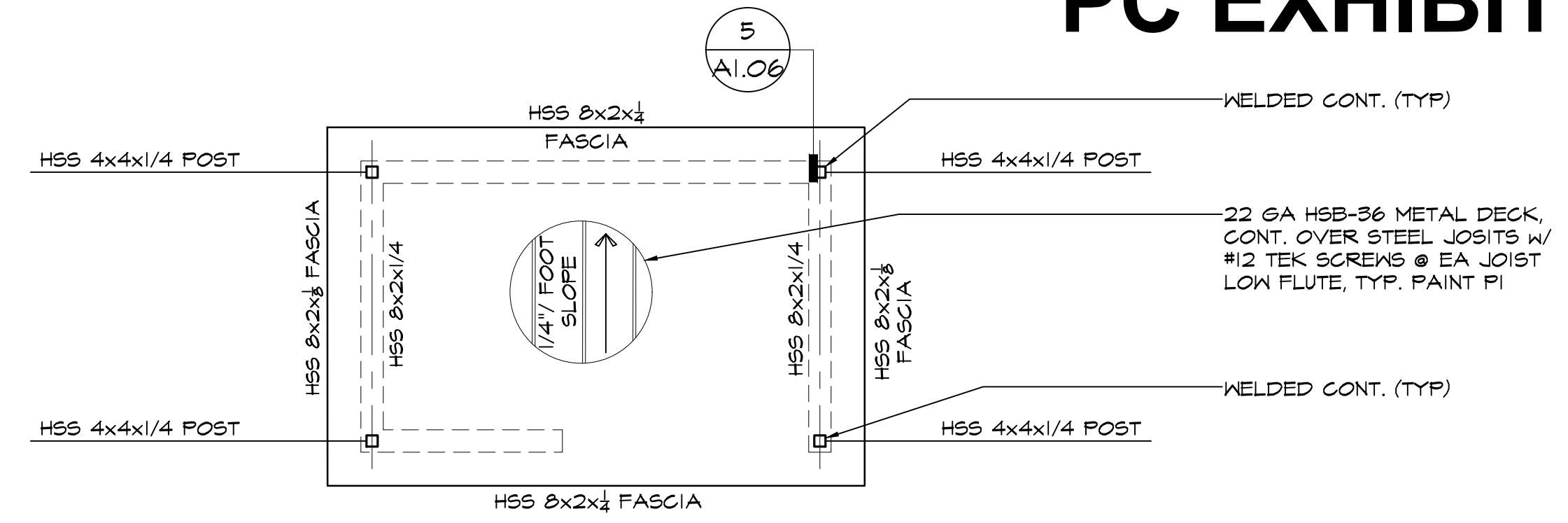
Designed: JLR  
Drawn: JLR  
Checked: JLR  
Approved: KCH  
Date: XX/XX/XX

**Barghausen Consulting Engineers, Inc.**  
18215 72nd Avenue South  
Kent, WA 98032  
425.251.6222 [barghausen.com](http://barghausen.com)

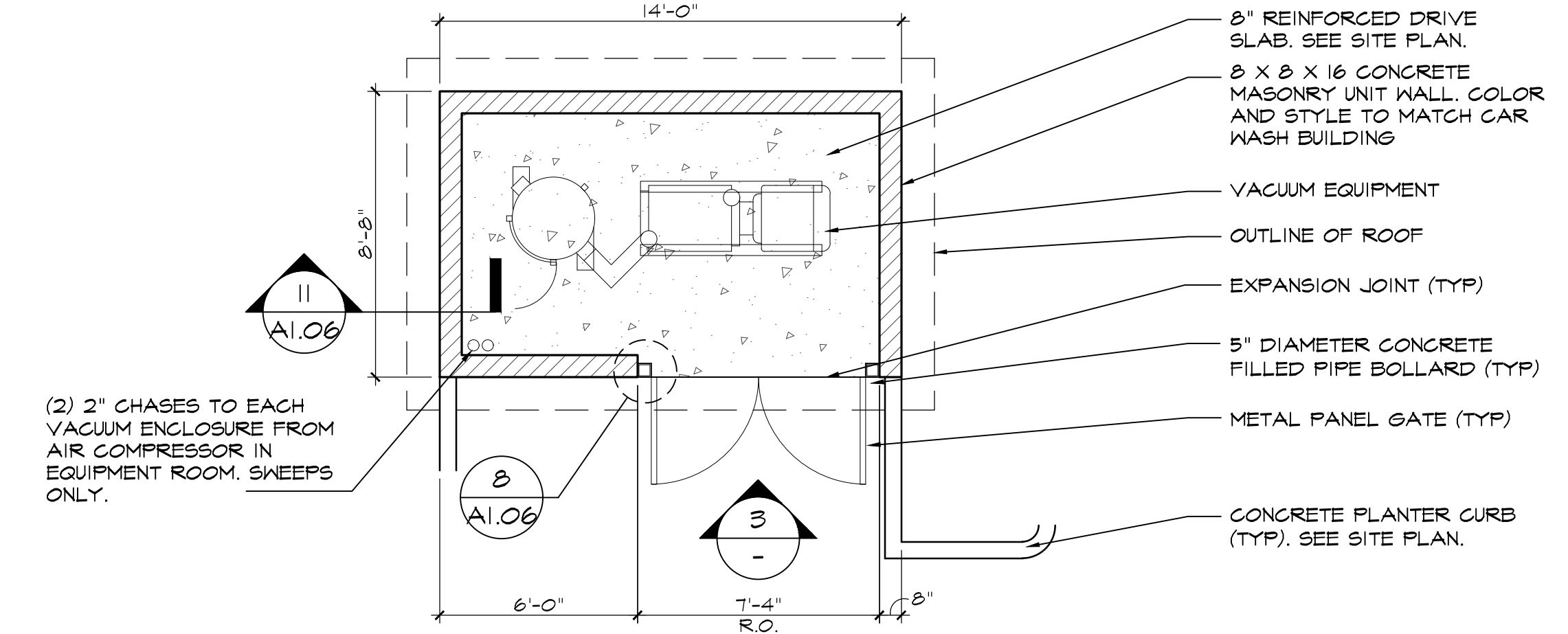
Job Number: 23359  
Sheet: A1.04

P:\23000a\23359\preliminary\Arch\23359 A104 VACUUM CANOPY.dwg 7/18/2024 10:47 AM MBERRY

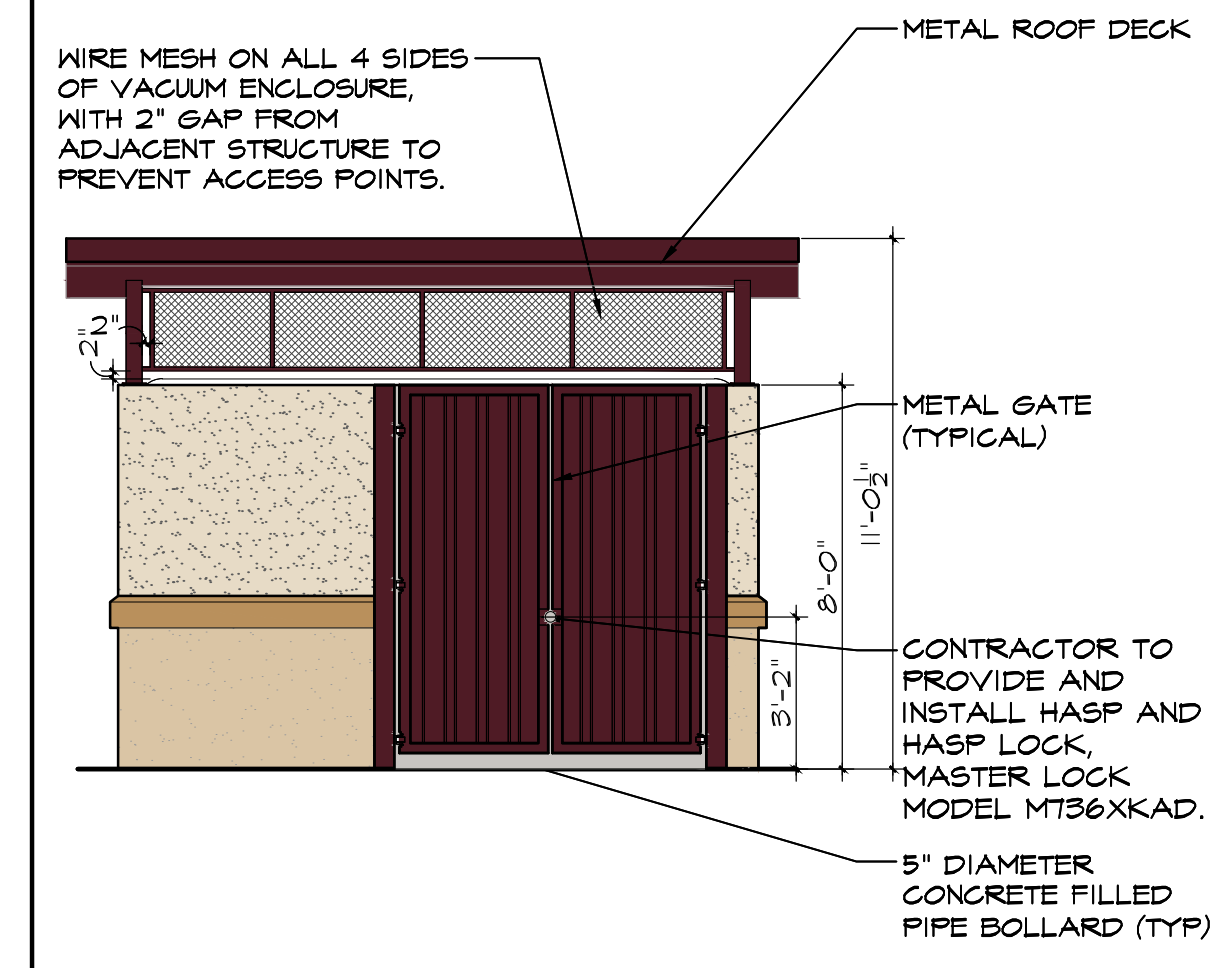
# PC EXHIBIT H



**1** SCALE: 1/4"=1'-0"  
FILE: A109-06 VACUUM ENCLOSURE ROOF PLAN



**2** SCALE: 1/4"=1'-0"  
FILE: A109-05 VACUUM ENCLOSURE PLAN



**3** SCALE: 1/4"=1'-0"  
FILE: A109-07 VACUUM ENCLOSURE FRONT ELEVATION

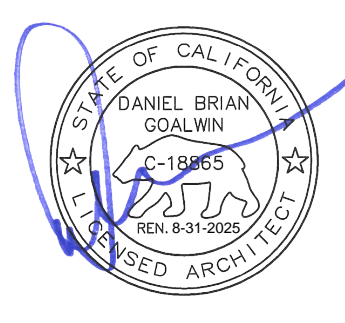
**COLOR LEGEND**

|    |  |                            |         |  |   |
|----|--|----------------------------|---------|--|---|
| P1 |  | DARK AUBURN<br>SW 6034     | CM2     |  | CORONADO STONE<br>"QUICK STACK CARMEL MOUNTAIN" |
| P2 |  | TORCHLIGHT<br>SW 6374      | CM3     |  | CORONADO STONE<br>CHISELED STONE SILL<br>"BUFF" |
| P3 |  | ANTIQUE WHITE<br>SW 6119   | P6      |  | FIRESTONE METALS<br>"BRANDYWINE"                |
| P4 |  | SNOWBOUND<br>SW 7004       | W1 & W2 |  | CLEAR ANODIZED ALUMINUM                         |
| P5 |  | BELIEVABLE BUFF<br>SW 6120 |         |  |   |
| P6 |  | SAFETY YELLOW<br>SW 4084   |         |  |   |

Revision No. Date By Ckd. Appr.

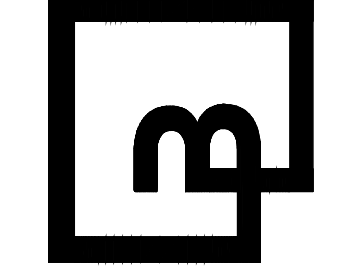
**Title:**  
VACUUM ENCLOSURE  
QUICK QUACK CAR WASH NO. 26-651  
300 NORTH SUNRISE AVE  
ROSEVILLE, CALIFORNIA

**For:**  
QUICK QUACK CAR WASH  
6020 WEST OAKS BLVD., SUIT 300  
ROCKLIN, CA 95765



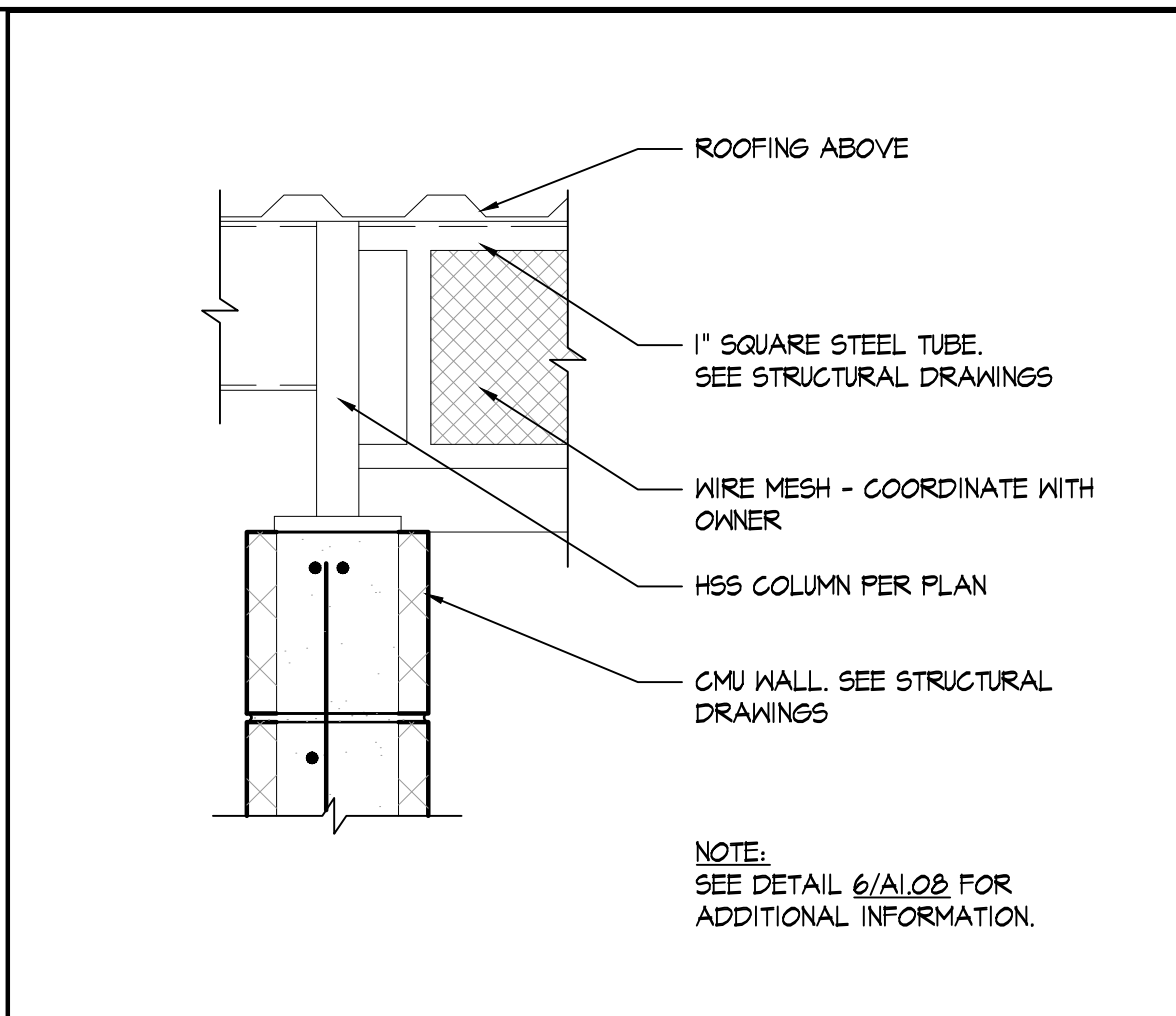
Scale: Horizontal As Noted Vertical N/A  
Designed: JLR  
Drawn: JLR  
Checked: JLR  
Approved: KCH  
Date: XX/XX/XX

**Barghausen Consulting Engineers, Inc.**  
18215 72nd Avenue South  
Kent, WA 98032  
425.251.6222 [barghausen.com](http://barghausen.com)

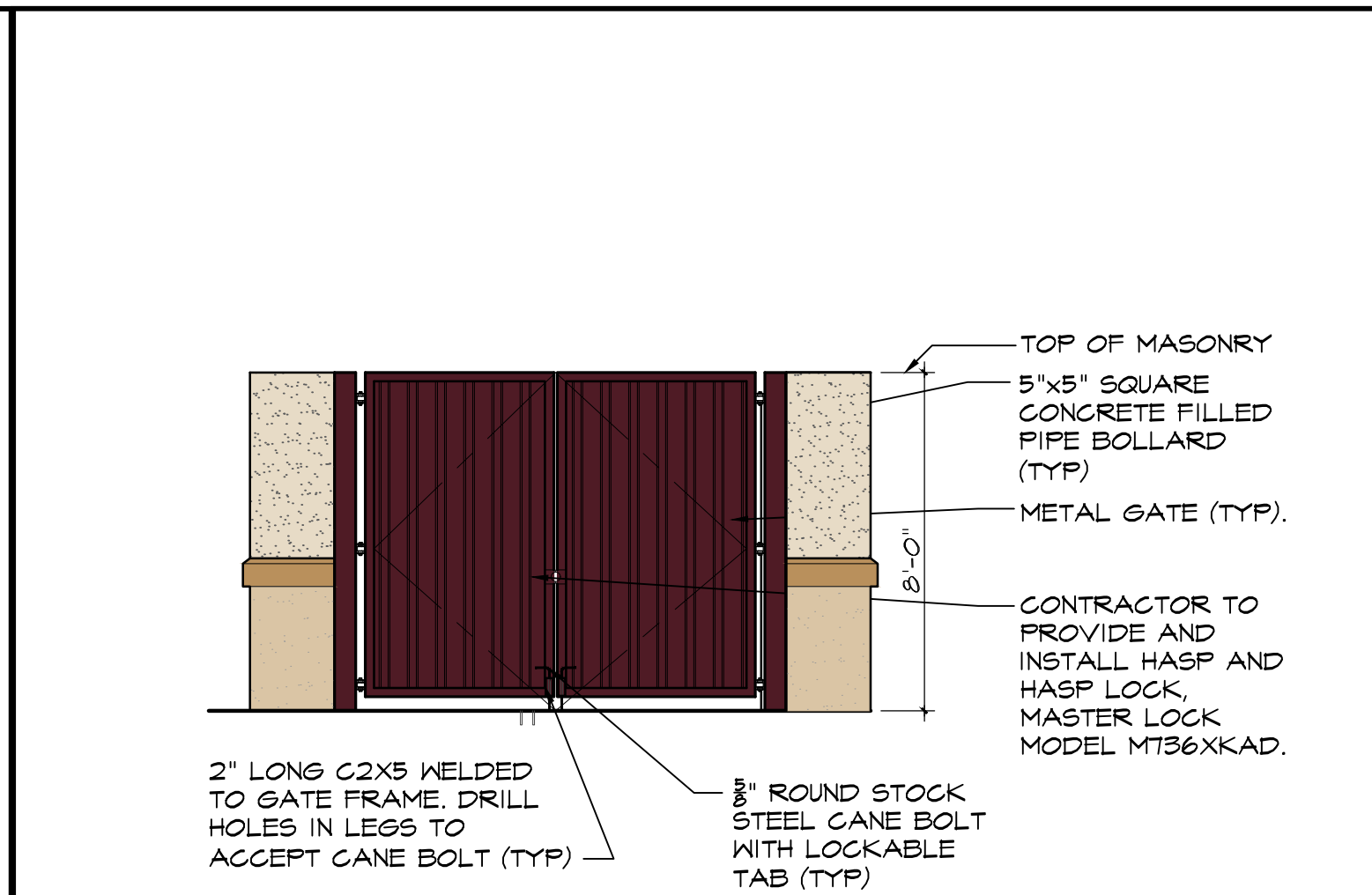


Job Number: **23359**  
Sheet: **A1.05**

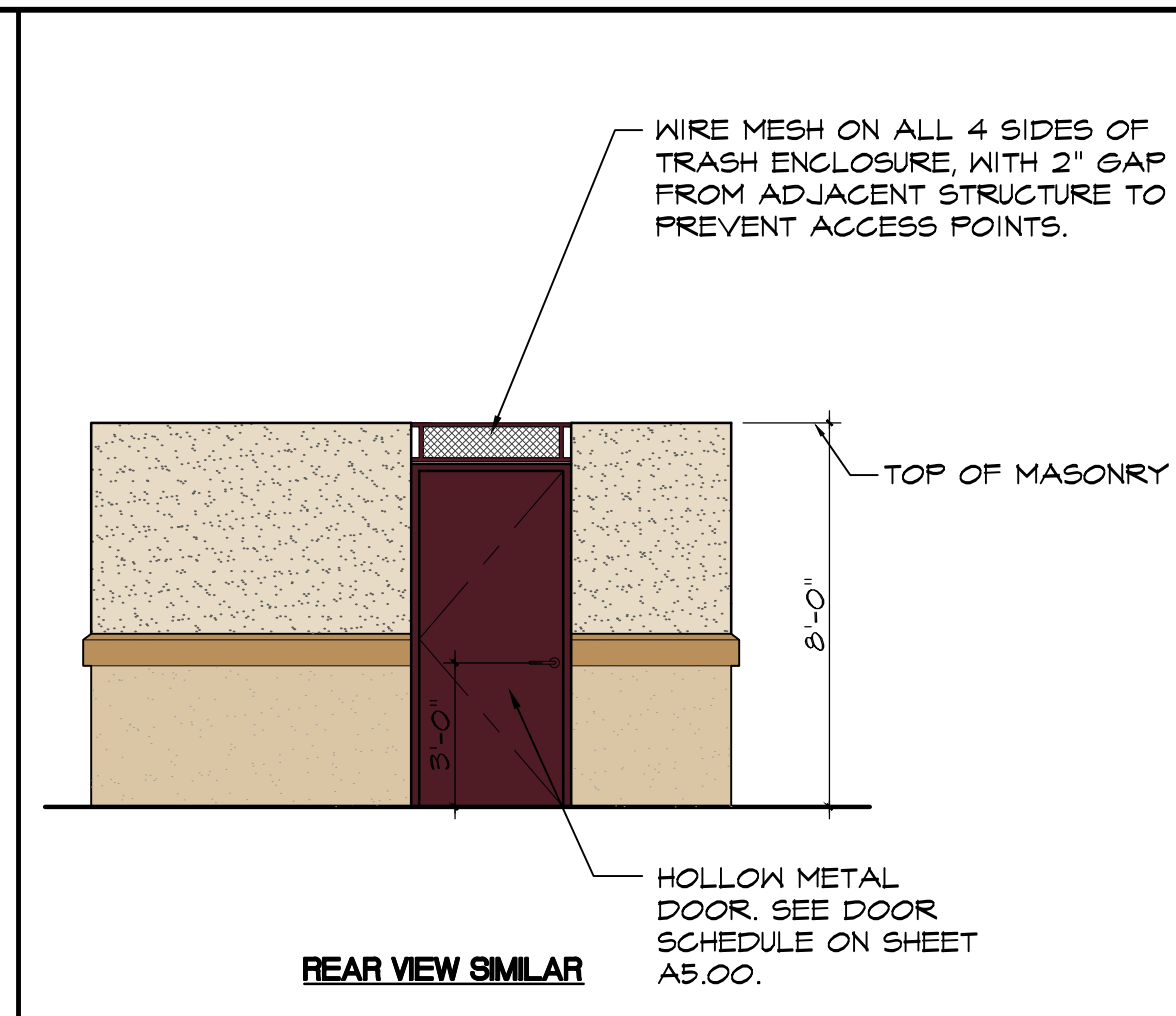
# PC EXHIBIT H



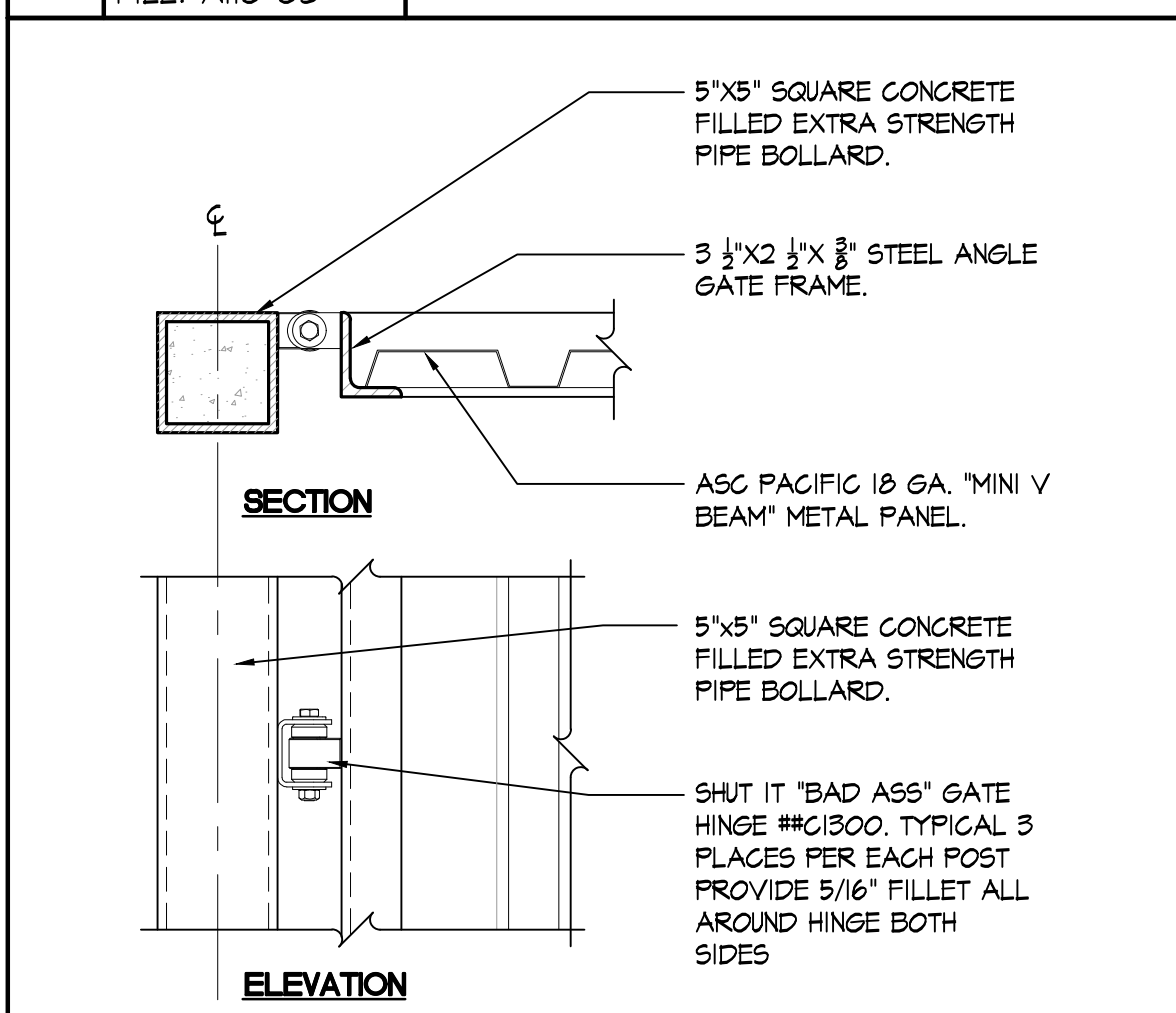
**8** SCALE: 1/2"=1'-0"  
FILE: A10-08 **ROOF MESH DETAIL**



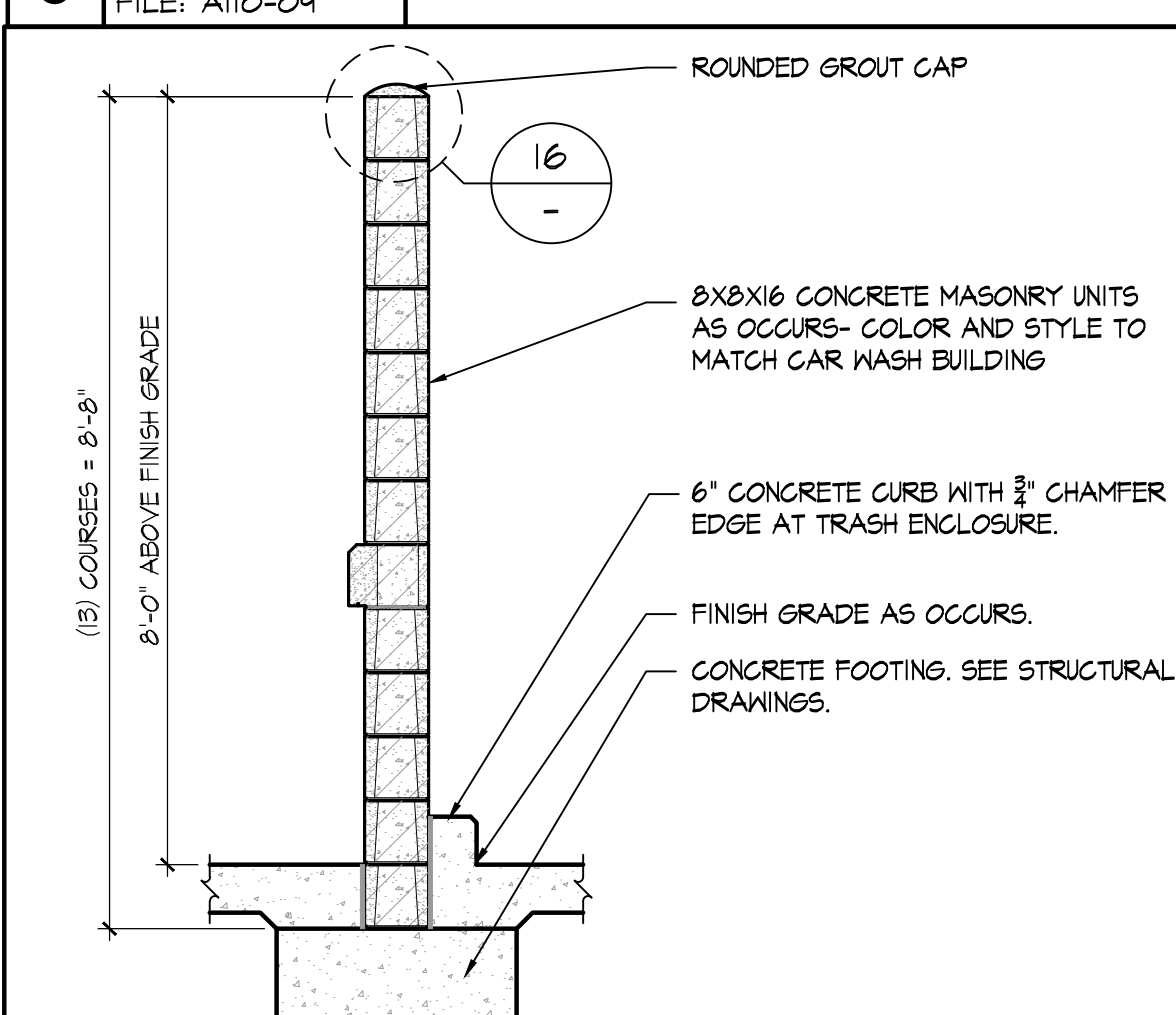
**7** SCALE: 1/4"=1'-0"  
FILE: A108-04 **TRASH ENCLOSURE FRONT ELEVATION**



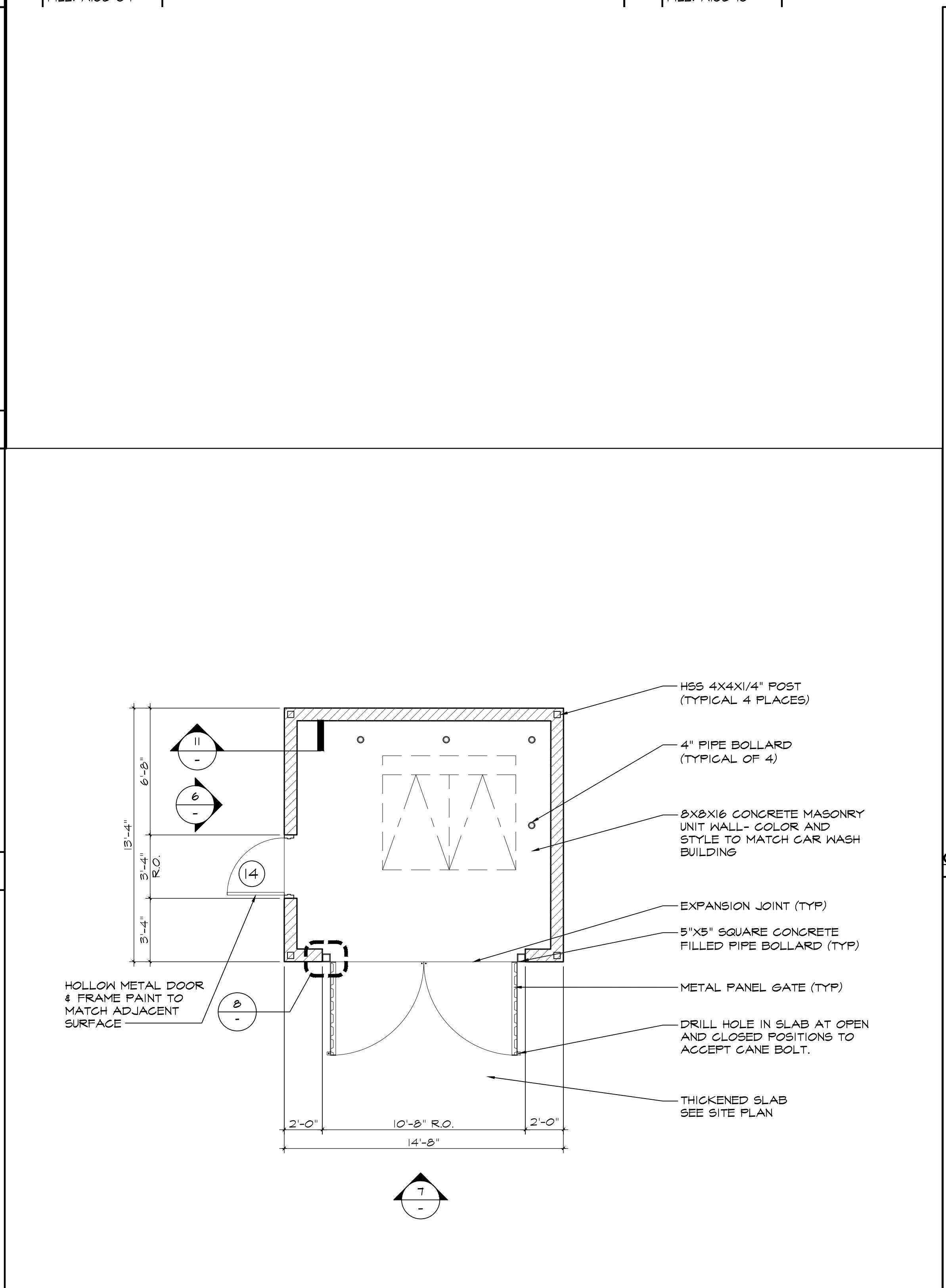
**6** SCALE: 1/4"=1'-0"  
FILE: A108-10 **TRASH ENCLOSURE SIDE ELEVATION**



**9** SCALE: 1/2"=1'-0"  
FILE: A10-04 **VACUUM ENCLOSURE GATE HINGE**



**10** SCALE: 1/2"=1'-0"  
FILE: A10-11 **WALL SECTION**



**1** SCALE: 1/4"=1'-0"  
FILE: A108-06 **MASONRY TRASH ENCLOSURE PLAN**

**COLOR LEGEND**

|    |  |                            |         |  |  |
|----|--|----------------------------|---------|--|--|
| P1 |  | DARK AUBURN<br>SW 6034     | CM2     |  | CORONADO STONE<br>"QUICK STACK CARMEL<br>MOUNTAIN" |
| P2 |  | TORCHLIGHT<br>SW 6374      | CM3     |  | CORONADO STONE<br>CHISELED STONE SILL<br>"BUFF"    |
| P3 |  | ANITQUE WHITE<br>SW 6119   | P6      |  | FIRESTONE METALS<br>"BRANDYWINE"                   |
| P4 |  | SNOWBOUND<br>SW 7004       | W1 & W2 |  | CLEAR ANODIZED ALUMINUM                            |
| P5 |  | BELIEVABLE BUFF<br>SW 6120 |         |  |  |
| P6 |  | SAFETY YELLOW<br>SW 4084   |         |  |  |

No. Date By Ckd. Appr. Revision

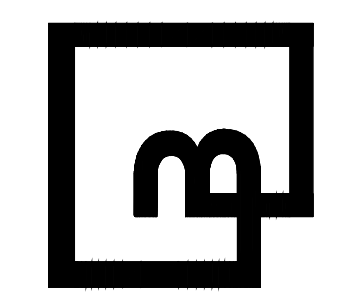
**Title:**  
VACUUM AND TRASH ENCLOSURE  
QUICK QUACK CAR WASH NO. 26-651  
300 NORTH SUNRISE AVE  
ROSEVILLE, CALIFORNIA

**For:**  
QUICK QUACK CAR WASH  
6020 WEST OAKS BLVD., SUIT 300  
ROCKLIN, CA 95765



|          |            |          |          |          |
|----------|------------|----------|----------|----------|
| Scale:   | Horizontal | As Noted | Vertical | N/A      |
| Designed | JLR        | JLR      | JLR      | JLR      |
| Drawn    | JLR        | JLR      | JLR      | JLR      |
| Checked  | JLR        | JLR      | JLR      | JLR      |
| Approved | KCH        | KCH      | KCH      | KCH      |
| Date     | XX/XX/XX   | XX/XX/XX | XX/XX/XX | XX/XX/XX |

**Barghausen Consulting Engineers, Inc.**  
18215 72nd Avenue South  
Kent, WA 98032  
425.251.6222 [barghausen.com](http://barghausen.com)



Job Number  
**23359**  
Sheet  
**A1.06**

P:\23000a\23359\preliminary\Arch\23359 A105 VACUUM AND TRASH ENCLOSURES.dwg 7/19/2024 7:18 AM MUEHLIN